

Animals' Planet

By the Magical Girls from Room 221

By the Magical Girls from Room 221

魔法少女

★ (Magical girl) ★

朱聰之 何靜 陆婉莹 徐艺圆





The giant panda also known as panda bear or simply panda, is a bear native to south central China. It is easily recognized by the large, distinctive black patches around its eyes, over the ears, and across its round body. The giant panda is a conservation reliant vulnerable species. A 2007 report shows 239 pandas living in captivity inside China and another 27 outside the country.

Père David's deer, also known as the milu or elaphure, is a species of deer that are mostly found in captivity. This semiaquatic animal prefers marshland, and is native to the subtropics of China. Due to hunting and land reclamation the demography of the Pere David's deer became even smaller. By 1939, the last of the wild species were shot and killed.





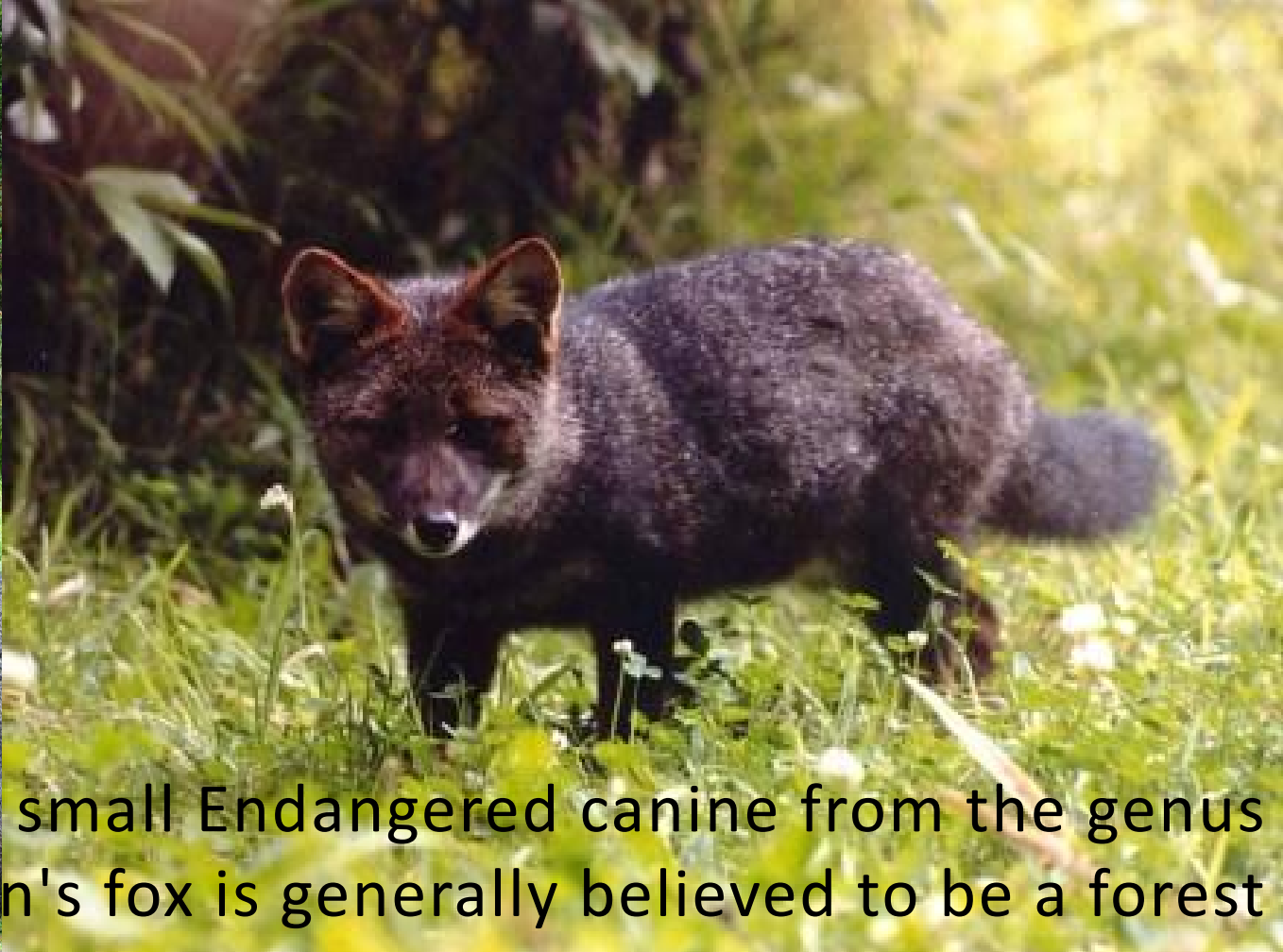
The Andean mountain cat is a small wild cat native to the high Andes that has been classified as Endangered by IUCN because fewer than 2500 individuals are thought to exist in the wild. The long bushy tail has 6–9 rings, which are dark brown to black. The direct and indirect threats affecting Andean cats are habitat loss and degradation, traditional hunting, introduction of diseases and so on.



The maned sloth is a three-toed sloth that lives only in Brazil. It is one of four species of three-toed sloth. It has declined since then as these forests have dwindled. The major threat to the maned sloth is the loss of its forest habitat as a result of lumber extraction, charcoal production, and clearance for plantations and cattle pastures. Excessive hunting is also a threat.



The baiji is a functionally extinct species of freshwater dolphin formerly found only in the Yangtze River in China. It was regarded as the goddess of protection by local fishermen and boatmen in China. It has been credibly claimed, after surveys in the Yangtze River during the 1980s, that baiji could be the first dolphin species in history that humans have driven to extinction.



Darwin's fox is a small Endangered canine from the genus *Lycalopex*. Darwin's fox is generally believed to be a forest obligate species found only in southern temperate rainforests. The species was previously classified as Critically Endangered by the IUCN, but in 2016 was downlisted to Endangered, as its area occurrences is apparently substantially larger than originally believed.



The Newfoundland wolf was a possible subspecies of gray wolf native to Newfoundland. It was described as being a medium-sized, slender-skulled wolf with a white pelt, though melanists also occurred. The last specimen was reportedly killed in 1911.

Some endangered animals



CONTENTS



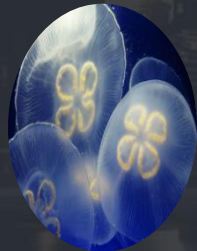
*Muscardinus
avellanarius*



Sand cat



Chichilla



*Peach blossom
jellyfish*



*Procapha
przewalskii*

Muscardinus avellanarius

They are in
danger!



Sand cat--沙猫



Sand cat is one of the smallest cats .It is usually 2.3kg weight.Its legs are short,the ears are big, and the head proportion is big.Its fur is soft and thick,the body color is close to the sand.

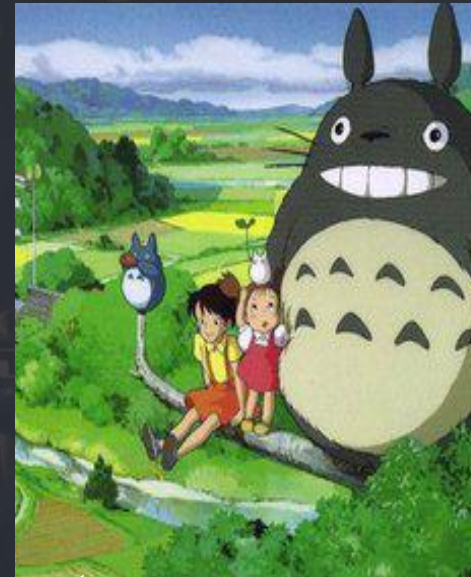
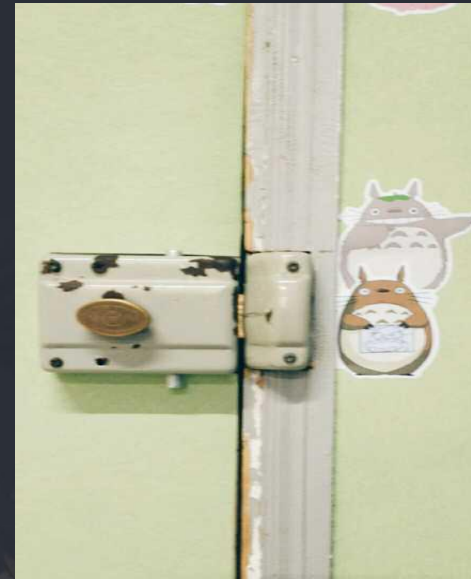
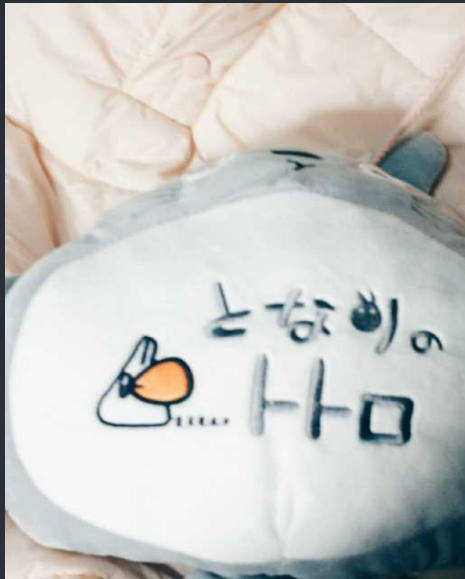
In Pakistan the sand cats were extinct in 1940. There were only more than one hundred sand cats in the world.



Chichilla--龙猫



Chinchillas typically about 15 years. But 18~20 years is not uncommon. With gentle handling from a young age most of them will become quite tame and bond closely with their owners, although sometimes they do not like to be held. They are very active and cute. they are largely nocturnal so will be most active at night. so they should be kept in a fairly quiet area during day. chinchillas require a lot of roughage and the diet should mainly be made up of quality grass hay along with pellets made for them. the digestive system of them is fairly sensitive so any diet changes should be gradual. moreover they only take dust bath and they need items for chewing to keep the incisor teeth in good condition.



The Cartoon character
My Neighbor TOTORA ---
Miyazaki Hayao





Peach blossom jellyfish

Peach blossom jellyfish is a life of small freshwater jellyfish, recorded 11. Life in the rivers and lakes clean. Life cycle consists of asexual and sexual reproduction stage. Live in fresh water, so the English name of Freshwater jellyfish (Freshwater jellyfish). About 2 cm in diameter, the edge of the bell shaped body with hundreds of root short tentacles. Alternation of generations. Xi form about 2 mm high, no tentacles, borrow medusa budding way.





Procapra przewalskii shape is like an antelope, but body shape than antelope slightly smaller, length is about 110 cm, shoulder about 50 cm tall, male antelope with a pair of black with a ring edge Angle, Angle of sharp bend, violent Angle of about 30 cm long in the second half of Angle, corner point significantly slightly upward, while the internal bending form relatively hook at the end, which is different with itself rear curved yellow horns. White black lips, jaws. Females, adult males a weight is about 27 kg, about 23 kg. The tail is shorter, less than 11 cm.

END



A photograph of five white dogs with black faces running on a dirt path in a forest. The dogs are captured in mid-stride, with their front legs raised and their bodies leaning forward. The background is a dense forest of tall, thin trees with green foliage. The ground is a reddish-brown dirt path.

◆ Current situation of animal cruelty

◆ Current situation of animal protection



昵图网 www.nipic.com BY: xlaoke0705

NO:20111228195113452194



大图网 DAIMG.com

NO:2012051700005477

People kill animals for eating



昵图网 www.nipic.com

By:cuijiujiang No:20140916042654436000



昵图网 www.nipic.com BY: 冰丫头111

NO:20110701130007833000



People kill animals for their fur which can be made beautiful and expensive fur coats





People force animals to perform





The cruel man

deyl.com
生活

lail-alsahara.com

In a Japanese fishing village which called Taiji, there are about 2000 dolphins being killed every year. The scene is very bloody and horror, and is considered as the most flagitious area in the world. Most of the dolphins are used as food for sale. In these photographs taken in 2003, the dolphin was brutally massacred by local fishermen of Taiji, which surrounded by the sea, has also been dyed red with blood.



Endangered
species
protection



Why are they in danger?

- Natural selection
- Habitat destruction and loss
- Disorderly catch and illegal hunting
- Environmental pollution
- Natural disasters





Why should people care? Because we need animals, and because once they are gone, there will never be any more. Animals are more than just beautiful or interesting. They are more just a source of food. Every animal has its place in the balance of nature. Destroying one kind of animal can create many problems. For example, when farmers killed large numbers of hawks, the farmers' stores of corn and grain were destroyed by rats and mice. Why? Because hawks eat rats and mice, with no hawks to keep down their numbers, the rats and mice multiplied quickly.

Luckily, some people are working to help save animals. Some groups raise money to let people know about the problem. And they try to get the governments to pass laws protecting animals in danger. Quite a few countries have passed laws. These laws forbid the killing of any animal on the danger list. Slowly, the number of some animals in danger is growing.





Animals are our friends



Wolong Nature Reserve

Located in Wenchuan County of Sichuan Province, Wolong Nature Reserve is a key nature preservation area designed primarily to protect and reproduce the giant pandas. Established in 1963, the reserve covers an area of about 200,000 hectares. Wolong Nature Reserve houses more than 150 highly endangered giant pandas.



Dafeng Nature Reserve



Dafeng Nature Reserve is located near Huanghai in Jiangsu province, which is an area of 78000 hectares in total. Dafeng Nature Reserve is the largest reserve of elks, covering an area of the world's biggest wild elk populations, which has built the world's largest elk gene pool.

<http://www.animalplanet.com/>

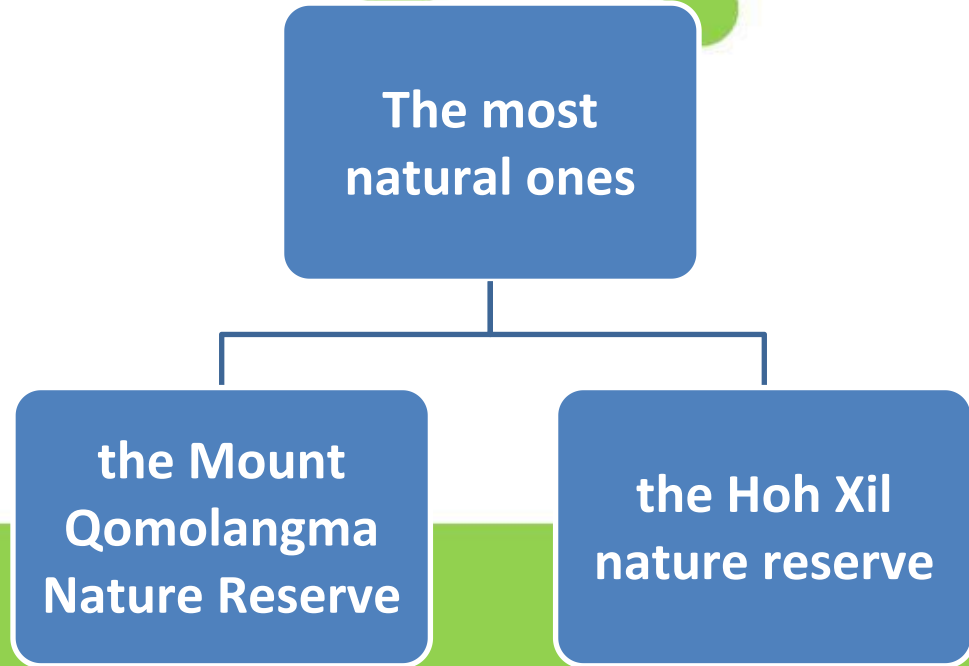
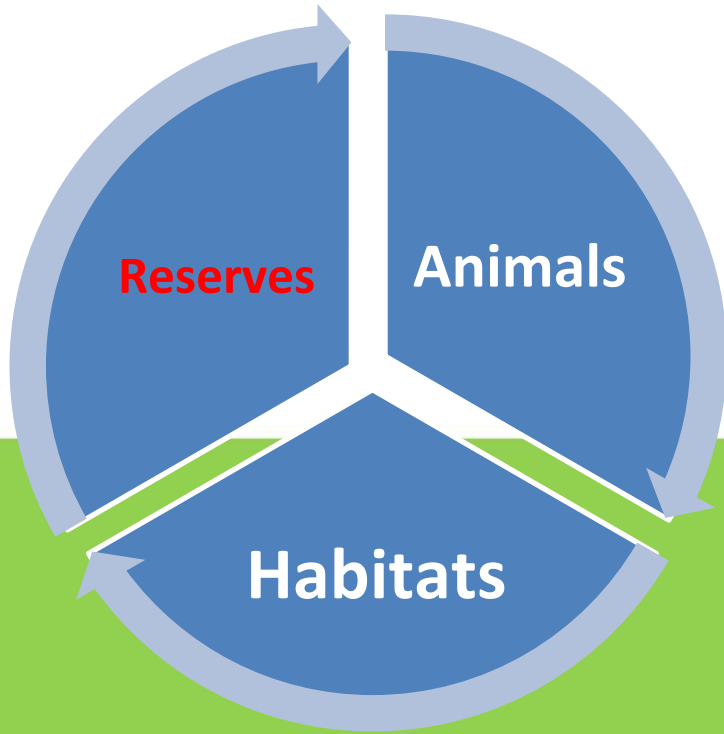
Animal Planet is the world's first animal-oriented television channel. The channel is produced by Discovery, who is the world's largest documentary producer. The channel includes animal family dramas, animal contests, world-class documentaries, animal star magazines, animal memoirs and how to raise animals.

What can we do to protect animals

——*By Susan*

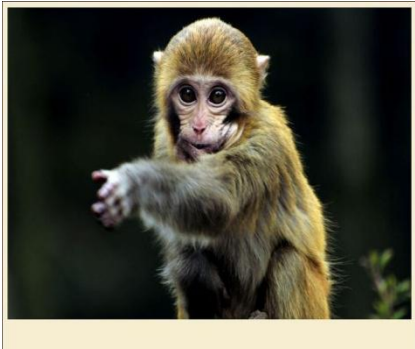
For the government

- Setting up the nature reserves



PS: Hoh Xil (可可西里) buffalo(水牛) golden monkey(金丝猴)

- The domestication and breeding(驯养繁殖)



Cervus nippon (梅花鹿) Macaca mulatta (猕猴)

To make a wild animal used to living with or working for humans, so in this way people can help the endangered animals to breed.

Benefits

Prevent or delay the extinction of species

Satisfy the people's production and living needs



Rana chensinensis (中国林蛙) Paguma larvata taiwana (果子狸)

For the individual

Ourselves

**support
endangered
animal protection
and management**

**put up posters to
call on people to
show mercy to the
animals**

**Next
Generation**

**tell them the
importance of
protecting wild
animal**

**let them know
that animal and
human beings are
all friends**

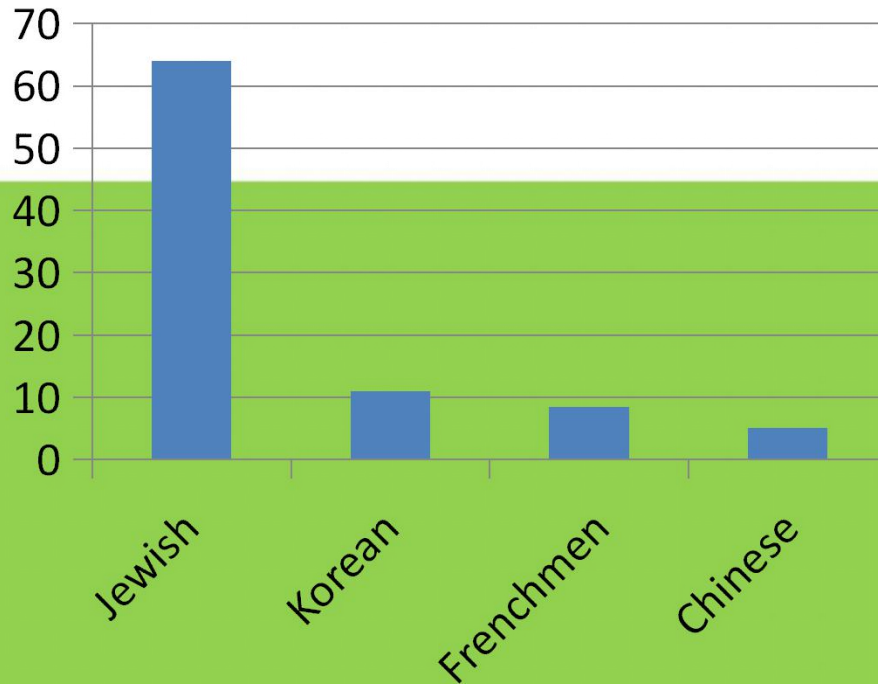


Next

Generation

PS: analogy(比喻)

The average amount of books a single person reads per year in different countries.



Thank you!

